



**AMREF INTERNATIONAL UNIVERSITY**  
**SCHOOL OF MEDICAL SCIENCES**  
**DEPARTMENT OF REHABILITATIVE MEDICINE**  
**BACHELOR OF SCIENCE IN PHYSIOTHERAPY**

**END OF TRIMESTER EXAMINATIONS JANUARY TO APRIL 2024**

**UNIT CODE: PHT 121**

**UNIT NAME: INTRODUCTION TO SIGN LANGUAGE**

**DATE: 18<sup>th</sup> APRIL 2024**

**TIME: 4.15PM-6.15PM**

**INSTRUCTIONS**

1. All students will have two (2) hours to complete the examination
2. This is an **online exam**, Attempt all questions as per the instruction
3. It is the student's responsibility to report any page and number missing in this paper.
4. Check that the paper is complete
5. Total number of pages is 9 including the cover.
6. Read through the paper quickly before you start.
7. Upon finishing the exam paper, on submission, the message 'Your examination has been submitted' will appear.

**TOTAL: \_\_\_\_\_/70**

**PERCENT: \_\_\_\_\_/100%**

**POINTS EARNED TOWARDS FINAL GRADE \_\_\_\_\_/70**

**SECTION A (30mks)**

1. Which among the following uses open palm hand shape in its sign?
  - A. love
  - B. society
  - C. rain
  - D. please
2. Which among the four words uses letter D hand shape in its sign?
  - A. Destroy
  - B. Build
  - C. Discuss
  - D. Consider
3. Which of the following is non manual feature?
  - A. Movement
  - B. Ability to sign
  - C. Li movement
  - D. Hand shape
4. Who invented the two-handed manual alphabet?
  - A. George Dargano
  - B. Charles Abbe
  - C. Professor Michael Ndurumo
  - D. Vasco Dagamar
5. Who was the first man to advocate for sign language in Kenya?
  - A. Charles Abbe
  - B. professor Michael Ndurumo
  - C. Thomas Hopkins
  - D. Gallaudet
6. Which was the first Kenyan deaf school to be started in Kenya?
  - A. Tree side school for the deaf
  - B. Kenya school for the deaf
  - C. Machakos school forth deaf
  - D. Kiambu institute for the deaf
7. Who among the following was involved in the development of sign language in America?
  - A. Pablo de bonnet
  - B. Proff Michael Ndurumo

- C. Chinua Achebe  
D. Thomas Hopkins Gallaudet.
8. Which of the following is true about finger spelling?
- A. It is only taught to the deaf
  - B. It is only used to sign between deaf community
  - C. It is the use of two languages for the purpose of communication
  - D. Can be used in place of signing a word.
9. Which of the following word have the same sign?
- A. Play and cry
  - B. True and confirm.
  - C. Come and bring
  - D. Please and sorry
10. Which of the following is a manual skill?
- A. Receptive skills.
  - B. Pre-manual skills
  - C. Hand shape
  - D. Non manual features
11. Identify which of the following skills is essential for children with Hearing Impairment?
- A. Typing on the key board
  - B. Scribbling in the air
  - C. Talking to the children loudly
  - D. Signing words of time
12. Which of the following hand shape is used in signing the word confuse?
- A. Extended index finger
  - B. Open palm
  - C. Fore arm
  - D. Claw hand shape.
13. Which of the following signs uses the face as the place of articulation?
- A. Please
  - B. Accept
  - C. Girl
  - D. Consider.
14. Which one of the following signs uses downward movement during signing?
- A. Bring

- B. Continue
  - C. Depend.
  - D. Behave
15. Which of the following statements describes the term 'orientation'?
- A. It is the direction of the palm in relation to the body of the signer
  - B. It is the movement of the hand from one location to the other
  - C. It is the location of the handshape in relation to the hand of the body of the signer
16. The following words are formed with an OPEN PALM identify which one uses two open palms to form its sign?
- A. Important.
  - B. Please
  - C. Your
  - D. Monday
17. Which of the following consideration is supposed to be made when explaining movement of a sign?
- A. Speed of movement.
  - B. Left side movement
  - C. Upward movement
  - D. Downward movement
18. Which of the following words is formed with letter 'U' on the face of the signer?
- A. Uncle
  - B. United
  - C. Unity
  - D. Use
19. Which of the following statements below is TRUE about Non-manual features?
- A. They accompany signs
  - B. Without non-manual features, signs alone may convey the intended meaning
  - C. They are formed with finger spelling words
  - D. They use pre requisite skills
20. Which of the following letters use drawing by use of the index finger?
- A. S
  - B. W
  - C. Z
  - D. R
21. Which one of the following is true about signing space?

- A. It is the space in front of the body
- B. One should face away from the signer
- C. It should be less than 3 meters
- D. The receiver of the sign should be seated

22. State which among the following images representation of signs is correct?



- A. Storm
- B. Water
- C. Alphabet
- D. Trees

23.

- A. D
- B. H
- C. J
- D. Y



24.

- A. S
- B. F
- C. Q



D. S



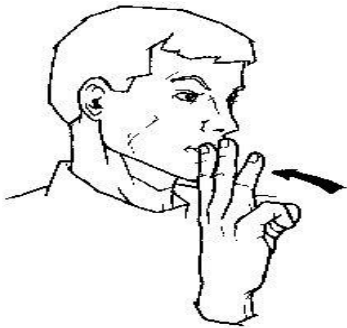
25.

A. W

B. S

C. O

D. H



26.

A. water

B. wife

C. why

D. thanks

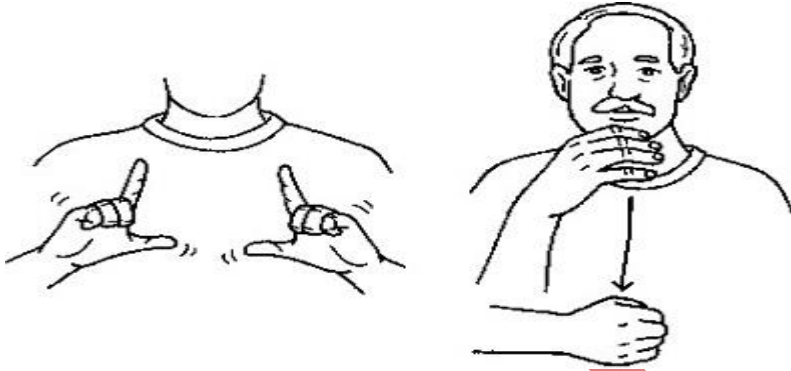


27.

A. Black

B. Head

- C. Hair
- D. Top



- 28.
- A. Language, husband
  - B. Father, language
  - C. Language, mother
  - D. Language, grandfather



- 29.
- A. True
  - B. Done
  - C. Place
  - D. Orange



- 30.
- A. Up

- B. start
- C. River
- D. Health

**SECTION B FOUR QUESTIONS (20MKS)**

1. Video of the teacher signing the following six words and the students writing them down. (6marks)
  - a) Avoid
  - b) Behave
  - c) Blood
  - d) Health
  - e) Injection
  - f) Bone
2. Define the following terms. (6mks)
  - a) Oralism –
  - b) Receptive Manual skills -.
  - c) Manualism –
3. When signing we use hand shapes to identify the shapes of a sign, mention four hand shapes used in sign language. (4mks)
4. Deaf children also need pre-requisite skills before they acquire sign language skills. State the four pre-requisite skills they need before learning sign language. (4mks)

**SECTION C.**

1. For the words below indicate their hand shape and orientation (10mks)
  - a) Mother
  - b) Sorry
  - c) Asthma
  - d) Blood
  - e) womb



2. Describe six modes (components) of total communication. (10mks)

AAMU