



**AMREF INTERNATIONAL UNIVERSITY
SCHOOL OF MEDICAL SCIENCE
DEPARTMENT OF REHABILITATION MEDICINE
BACHELOR OF SCIENCE IN PHYSIOTHERAPY
END OF MAY-AUGUST 2024 TRIMESTER EXAMINATIONS**

UNIT CODE: PHT 124 UNIT NAME: SIGN LANGUAGE

DATE: WEDNESDAY/ 14TH / AUGUST

TIME: TWO HOURS

START: 6PM STOP : 8PM

INSTRUCTIONS (physical exams)

- 1. Do not write on this question paper**

(Marks and questions distribution as per program curriculum.)

INSTRUCTIONS (Online examinations)

1. This exam is marked out of 70 marks
2. This Examination comprises 3 Sections
3. This online exam shall take 2 Hours
4. Late submission of the answers will not be accepted
5. Ensure your web-camera is on at all times during the examination period
6. No movement is allowed during the examination
7. Idling of your machine for 5 min or more will lead to lock out from the exam
8. The Learning Management System (LMS) has inbuilt integrity checks to detect cheating
9. Any aspect of cheating detected during and or after the exam administration will lead to nullification of your exam
10. In case you have any questions call the invigilator for this exam on Tel. 0705833434 and or the Head of Department on Tel 0720491032
11. For adverse incidences please write an email to: amiu.examinations@amref.ac.ke

1. Which one of the following countries use one handed manual alphabet?
 - A. England
 - B. Australia
 - C. Kenya
 - D. New Zealand
2. which one of the following is a handshapes used in Kenyan Sign language.
 - A. Pointed thumb
 - B. Open palm
 - C. Fixed finger
 - D. Open fist
3. Which of the following is not an element of a sign?
 - A. Movement
 - B. Ability to sign
 - C. Place of articulation
 - D. Hand shape
4. Who invented the two-handed manual alphabet?
 - A. George Dargano
 - B. Charles Abbe
 - C. Professor Michael Ndurumo
 - D. Vasco Dagamar
5. Who was the first man to advocate for sign language in Kenya?
 - A. Charles Abbe
 - B. professor Michael Ndurumo
 - C. Thomas Hopkins
 - D. Gallaudet
6. Which was the first Kenyan deaf school to be started in Kenya?
 - A. Tree side school for the deaf
 - B. Kenya school for the deaf
 - C. Machakos school forth deaf
 - D. Kiambu institute for the deaf
7. Who among the following was not involved in the development of sign language?

- A. Pablo de bonnet
 - B. Proff Michael Ndurumo
 - C. Chinua Achebe
 - D. Thomas Hopkins
8. Which of the following is not true about finger spelling?
- A. It is an art of shaping fingers to form letters of the alphabet
 - B. Only fingerspell at an acceptable speed
 - C. It is the use of two languages for the purpose of communication
 - D. Can be used in place of signing a word
9. The following are components of body language except one?
- A. Gestures
 - B. Cued speech
 - C. Eye contact
 - D. Hand movement
10. Which one of the following words when signed use same hand shape?
- A. House and important
 - B. Trees and which
 - C. Love and friend
 - D. Trees and father
11. The following skills are essential for children with Hearing Impairment except one?
- A. Movement from left to right
 - B. Scribbling in the air
 - C. Talking above the noise when addressing them
 - D. Arranging objects from left to right
12. Which of the following is not a hand shape?
- A. Extended index finger
 - B. Open palm
 - C. Fore arm
 - D. Claw shape
13. Which of the following is a non-manual feature?
- A. Facial expressions
 - B. seating
 - C. Eyebrow
 - D. Area of the body

14. Which one of the following is not an element of a sign?
- A. Manual skills
 - B. Handshape
 - C. Articulation
 - D. Orientation
15. Which of the following statements describes the term 'orientation'?
- A. It is the direction of the palm in relation to the body of the signer
 - B. It is the movement of the hand from one location to the other
 - C. It is the location of the handshape in relation to the hand of the body of the signer
 - D. It is the direction of the receiver's palm when signing
16. Which of the following word is formed with OPEN PALM hand shape?
- A. important
 - B. work
 - C. rain
 - D. unity
17. Which of the following words is formed on the face of the signer?
- A. Mother
 - B. search
 - C. muranga
 - D. Female
18. Which of the following words is formed with letter 'U' on the face of the signer?
- A. Uncle
 - B. United
 - C. Unity
 - D. Use
19. Which of the following statements below is TRUE about Non-manual features?
- A. They accompany signs
 - B. Without non-manual features, signs alone may convey the intended meaning
 - C. They are formed on the signer's body
 - D. They don't involve lip reading
20. Which of the following words portrays etiquette when signing?
- A. Please
 - B. common
 - C. bring

D. Stop

21. Which one of the following is true about signing space?

- A. It is the space in front of the class
- B. It should be such that it forms a circular shape
- C. It should be less than 3 meters from the receiver
- D. It should be more than 3 meters

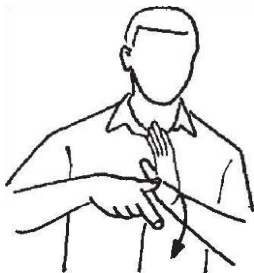
22. Which of the following is a hint for fluent signing?

- A. Your elbow should be down towards the waist
- B. The palm of your hand should face away from you
- C. Your hand should block your lips
- D. Find a deaf partner

23. State which among the following images representation of signs is correct?

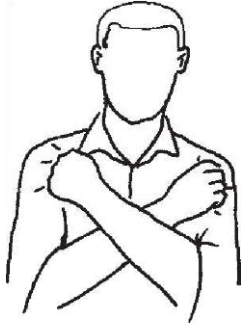


- A. children
- B. want
- C. family
- D. water



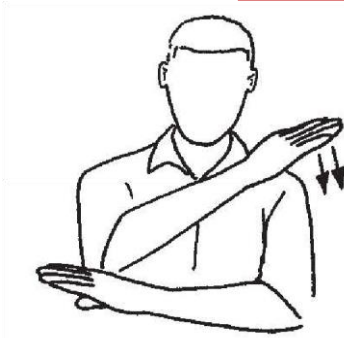
24.

- A. move
- B. leave
- C. level
- D. later



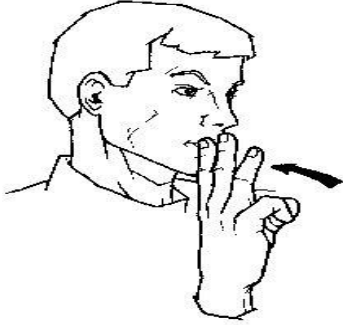
25.

- A. stop
- B. want
- C. love
- D. have



26.

- A. morning
- B. evening
- C. afternoon
- D. goodbye



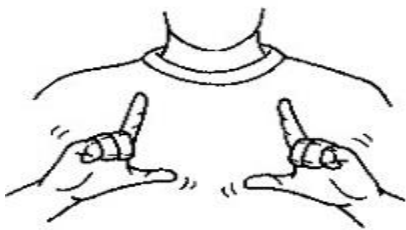
26.

- A. water
- B. wife
- C. why
- D. thanks



27.

- A. Alphabet
- B. Ask
- C. language
- D. Student



28.

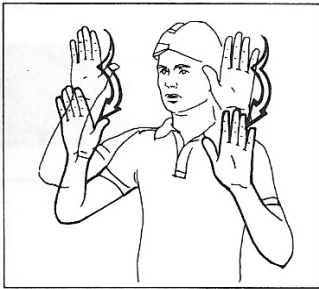
- A. Language, husband

- B. Father, language
- C. Language, mother
- D. Language, grandfather



29.

- A. True
- B. Done
- C. Place
- D. Orange



30.

- A. Up
- B. Important
- C. River
- D. Health



31.

- A. B
- B. U
- C. Y
- D. K

32. Which two among the formation of the following signs in relation to elements of a sign are true? (8mks)

(i) YOU

- A. Place of articulation- neutral space
- B. Hand shape- extended index finger
- C. orientation- palm facing upwards
- D. Movement- backwards

(ii) LOVE

- A. Place articulation-trunk (chest)
- B. Hand shape- Open palm shaped
- C. Orientation- palm facing signer
- D. Movement- sideways

(iii) RAIN

- A. Place of articulation- face
- B. Hand shape- Clenched fist
- C. Orientation- Palm facing down
- D. Movement- Up and down movement

(iv) TALK

- A. Place of articulation- chest
- B. Hand shape- extended index finger
- C. Orientation- Palms facing each other
- D. Movement- wavy movement

SECTION B. Attempt all the questions (20 Marks)

1. Define the following terms (6mks)

- a) Receptive Manual skills
- b) Orientation
- c) Pre-Manual skills

- d) Non-manual features are features used to accompany signs, state four of the features.
(4mks)

SECTION C. Attempt all the questions (20 Marks)

1. Discuss the origin and spread of Kenyan Sign Language (KSL) (10mks)
2. Describe six modes (components) of total communication. (10mks)

AMMU