



AMREF INTERNATIONAL UNIVERSITY
SCHOOL OF MEDICAL SCIENCES
DEPARTMENT OF REHABILITATIVE MEDICINE
BACHELOR OF SCIENCE IN PHYSIOTHERAPY
END OF JAN-APRIL 2025 SEMESTER EXAMINATIONS

UNIT CODE: PHT 121 UNIT NAME: SIGN LANGUAGE

DATE: 17th April 2025

TIME: TWO HOURS

START: 11:15 AM STOP: 1:15AM

SUPPLEMENTARY

INSTRUCTIONS

1. Attempt all questions as per the instructions in each section
2. This exam is marked out of 70 marks
3. This Examination comprises of Sections A, B and C
4. It is the student's responsibility to report any page and number missing in this paper.
5. Total number of pages are 9 including the cover page.
6. Read through the instructions carefully before starting.
7. Any aspect of cheating detected during and or after the exam administration will lead to nullification of your exam.
8. Do not write on this question paper, use the provided booklet to write your answers

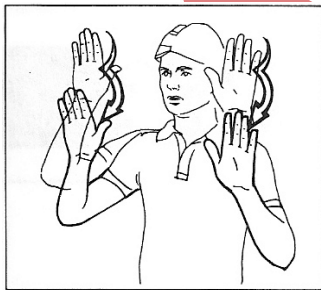
SECTION A. Multiple choice questions. Answer all the question (30mks)

1. Which among the following is a manual skill?
 - A. Fingerspelling
 - B. Mimicry
 - C. Receptive
 - D. Pantomime
2. Which among the four words uses letter P hand shape in its sign?
 - A. Pact
 - B. Pale
 - C. Purple
 - D. Paint
3. Which of the following is an element of a sign?
 - A. Crossed legs
 - B. Ability to sign
 - C. Place of articulation
 - D. Hair movement
4. Who invented the one-handed manual alphabet?
 - A. Juan Pablo de Bonet.
 - B. Charles Abbe
 - C. Professor Michael Ndurumo
 - D. Vasco Dagamar
5. When was the first school for the deaf started in America?
 - A. 1818
 - B. 1817
 - C. 1987
 - D. 1887
6. Which among the following states about the millan declaration of the 1880?
 - A. They made a declaration on manualism mode of teaching towards the deaf
 - B. Was ruled out under the declaration of the total communication.
 - C. They ruled on oralism to be used to teach the deaf
 - D. It ruled not to use oralism to teach the deaf

7. Who among the following was involved in the development of sign language in America?
 - A. Pablo de bonnet
 - B. Proff Michael Ndurumo
 - C. Chinua Achebe
 - D. Thomas Hopkins Gallaudet.
8. Which of the following is true about finger spelling?
 - A. It is only taught to the deaf
 - B. It is only used to sign between deaf community
 - C. It is the use of two languages for the purpose of communication
 - D. Can be used in place of signing a word.
9. Which of the following word have the same sign?
 - A. Play and cry
 - B. Meru and forever
 - C. Come and bring
 - D. Please and sorry
10. Which of the following is a manual skill?
 - A. Receptive skills.
 - B. Pre-manual skills
 - C. Hand shape
 - D. Non manual features
11. Identify which of the following skills is essential for children with Hearing Impairment?
 - A. Typing on the key board
 - B. Tracking objects from right to left
 - C. Talking to the children loudly
 - D. Signing words of time
12. Which of the following hand shape is used in signing the word can?
 - A. Extended index finger
 - B. Open palm
 - C. Fist hand shape
 - D. Fore arm.

13. Which of the following signs uses the chest as the place of articulation?
- A. Please
 - B. forever
 - C. cousin
 - D. Consider.
14. Which one of the following signs uses downward movement during signing?
- A. Bring
 - B. Continue
 - C. Depend.
 - D. Behave
15. Which of the following statements describes the term 'orientation'?
- A. It is the direction of the palm in relation to the body of the signer
 - B. It is the movement of the hand from one location to the other
 - C. It is the location of the handshape in relation to the hand of the body of the signer
 - D. It is a place of connecting the signed word and place
16. The following words are formed with an OPEN PALM identify which one uses two open palms to form its sign?
- A. Achieve.
 - B. Love
 - C. Meru
 - D. Monday
17. Which of the following consideration is supposed to be made when explaining movement of a sign?
- A. Speed of movement.
 - B. Left side movement
 - C. Upward movement
 - D. Downward movement
18. Which of the following words is formed with letter 'C' on the face of the signer?
- A. Cousin
 - B. Coin
 - C. consider
 - D. Come

19. Which of the following statements below is TRUE about Non-manual features?
- A. They accompany signs
 - B. Without non-manual features, signs alone may convey the intended meaning
 - C. They are formed with finger spelling words
 - D. They use pre requisite skills
20. Which of the following letters uses tow variations when signing?
- A. S
 - B. W
 - C. Z
 - D. R
21. Which one of the following is true about signing space?
- A. It is the space in front of the body
 - B. One should face away from the signer
 - C. It should be less than 3 meters
 - D. The receiver of the sign should be seated
22. State which among the following images representation of signs is correct?



- A. Important
- B. Meru
- C. Wave
- D. Trees



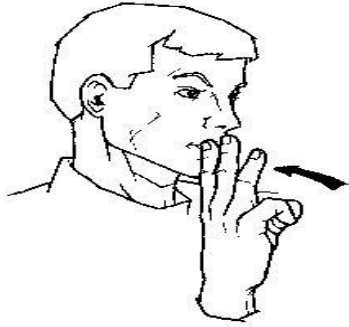
23.
A. D
B. H
C. J
D. Y



24.
A. S
B. F
C. Q
D. S



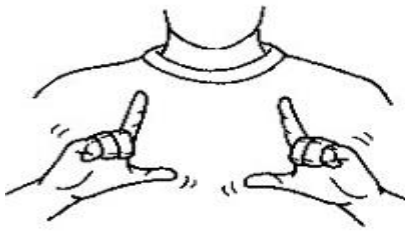
25.
A. Love
B. Have
C. Want
D. Win



- 26.
- A. water
 - B. wife
 - C. why
 - D. thanks



- 27.
- A. Black
 - B. Head
 - C. Hair
 - D. Top



- 28.
- A. Language, husband
 - B. Father, language
 - C. Language, mother
 - D. Language, grandfather



- 29.
- A. True
 - B. Done
 - C. Place
 - D. Orange



- 30.
- A. Up
 - B. start
 - C. River
 - D. Health

SECTION B FOUR QUESTIONS (20MKS)

1. Describe five factors that affect the attitude of the deaf and explain each. (6mks)
2. Define the following terms. (6mks)
 - a) Pantomime-
 - b) Mimickery-
 - c) Deaf-
3. When signing we use hand shapes to identify the shapes of a sign, mention four hand shapes used in sign language. (4mks)
4. Deaf children also need pre-requisite skills before they acquire sign language skills. State the four pre-requisite skills they need before learning sign language. (4mks)

SECTION C.

1. For the words below indicate their hand shape and orientation (10mks)
 - a) Father
 - b) Please
 - c) Together
 - d) Want
 - e) important
2. Describe six modes (components) of total communication. (10mks)