

102105T4COH

COMMUNITY HEALTH LEVEL 5

HE/OS/CH/CC/03/5/A

Apply Human Anatomy and Physiology

March/April 2025



**TVET CURRICULUM DEVELOPMENT, ASSESSMENT AND CERTIFICATION
COUNCIL (TVET CDACC)**

WRITTEN ASSESSMENT

INSTRUCTIONS TO CANDIDATE

1. This paper consists of **TWO** sections: **A** and **B**.
2. Answer **ALL** questions in section A and **ANY THREE** (3) questions in section B.
3. Marks for each question are indicated in the brackets.
4. Candidates are provided with a separate answer booklet
5. Do not write on the question paper.

This paper consists of FIVE (5) printed pages
Candidates should check the question paper to ascertain that all
pages are printed as indicated and that no questions are missing.

SECTION A (40 MARKS)

Answer ALL the questions in this section.

1. Tissue is a group of cells, in close proximity, organized to perform one or more specific functions. State FOUR types of tissues found in human body. [4 Marks]
2. The human sensory system is made up of sense organs. Outline THREE sensory organs. [3 Marks]
3. Karuk was involved in a road accident and started bleeding profusely. Mention TWO types of injuries you are likely to observe on Karuk's body. [2 Marks]
4. Blood is a loose connective tissue connecting different organs within the human body. Highlight THREE functions of blood in the body. [3 Marks]
5. Differentiate between human histology and physiology as applied in community health works. [4 Marks]
6. Visual impairment refers to the partial or complete loss of vision. State other FOUR eye disorders. [4 Marks]
7. Study the following diagram and provide one function each for THREE labeled organelles. [3 Marks]

Printed By: Amref International Training Center

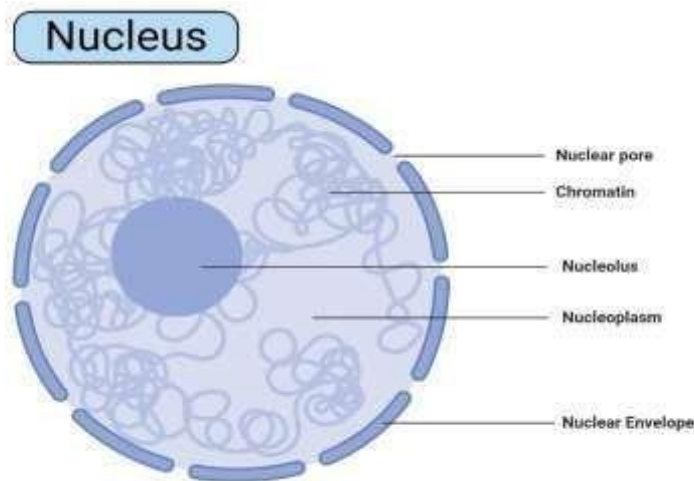
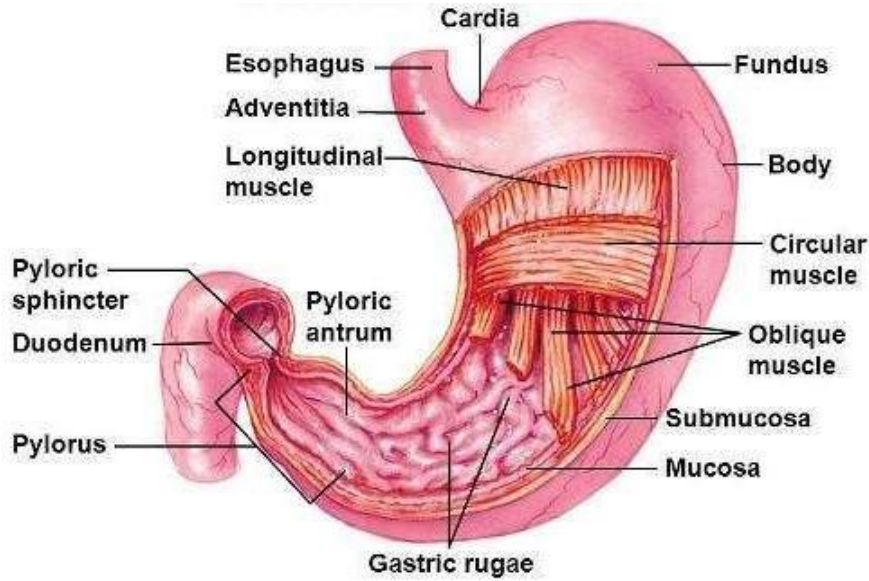


Figure: Nucleus, Image Copyright © Sagar Aryal, www.microbenotes.com

8. Non-Communicable diseases cannot be spread from one person to another. Provide FOUR examples of non-communicable diseases affecting humans. [4 Marks]
9. Nguni, a member of community football team sustained a serious head injury while playing. Name THREE regions of the brain that may be affected. [3 Marks]
10. Communicable diseases contribute to avoidable deaths in Kenya, regarding this, enumerate THREE measures you can apply to prevent communicable diseases in your workplace. [3 Marks]

11. The human body has 11 organ systems where various organs interact to perform complex functions. Identify THREE organ systems in the body. [3 Marks]

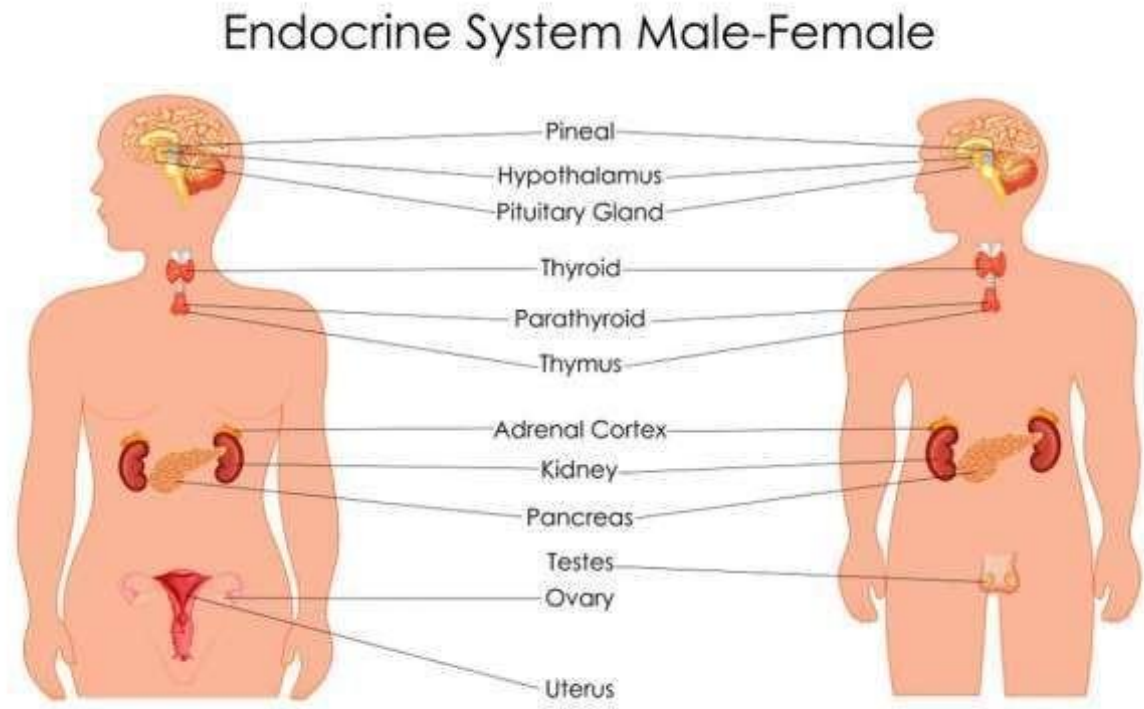
12. Observe the structure below, analyze FOUR ways in which it is adapted to its functions. [4 Marks]



SECTION B (60 MARKS)

Answer Any THREE Questions in This Section

13. The endocrine system is responsible for regulating a range of body functions through release of hormones. Study the diagram below.



- a) From the above diagram, describe TWO glands of endocrine system. [4 Marks]
 - b) Endocrine disorders interfere with normal body functioning. Evaluate FOUR endocrine disorders. [8 Marks]
 - c) Examine FOUR body functions controlled by endocrine system. [8 Marks]
14. Kenya has recognized cancer as a major public health problem, national population survey shows prevalence of cancer is on the rise. Cancer manifest through abnormal multiplication of normal cells.
- a) Differentiate between cancer stage 1 and stage 4 cancer. [4 Marks]
 - b) One of your community member has been diagnosed with throat cancer stage I(one). Suggest FOUR treatment options you can encourage him to use. [8 Marks]
 - c) Propose FOUR measures you can encourage community members to take to prevent cancer. [8 Marks]

15. The male reproductive system produces, sustains, and delivers sperm cells (spermatozoa) to the female reproductive tract.

- a) Using a well labelled diagram illustrate the structure of a human testis. [10 Marks]
- b) Elaborate FIVE ways the above testis is adapted to perform its functions.

[10 Marks]

16. Nephrons perform the primary function of the kidneys: regulating the concentration of water and other substances in the body. They filter the blood, reabsorb what the body needs, and excrete the rest as urine.

- a) Sketch a well labelled structure of a human nephron. [10 Marks]
- b) Explain FIVE special adaptations of nephron to its functions. [10 Marks]